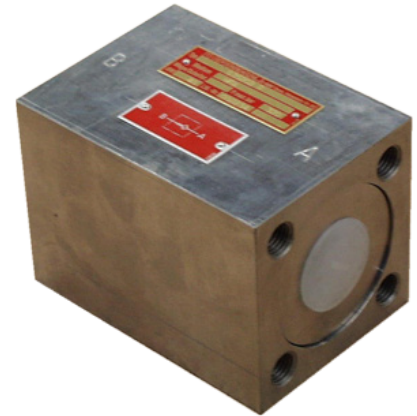


Check valve NW 10 to NW 80 for water and oil

max. 320 bar for flange connection



TECHNICAL DATA

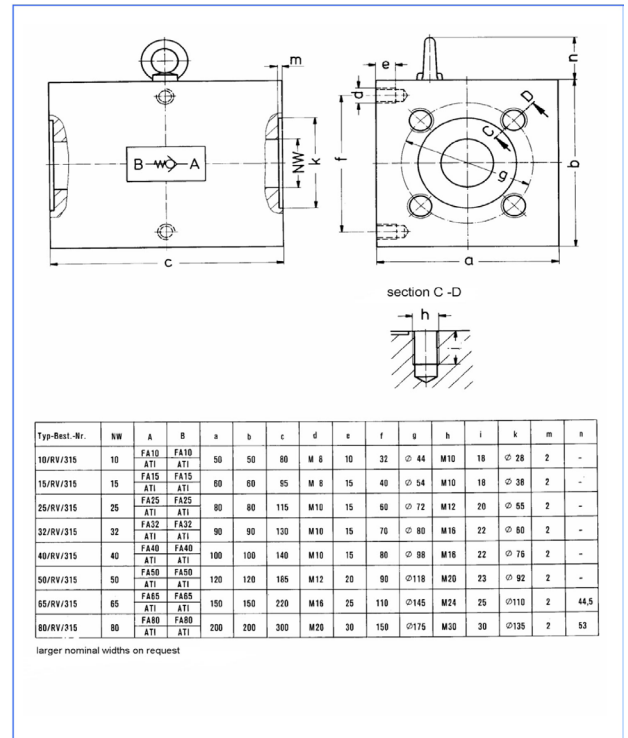
Series RV 10-80 check valves are cone seat valves. Sealing is effected by pressing two metal cones against one another. They were specially developed for water hydraulics. In accordance with the symbol attached to the housing, these check valves have a free passage from A to B and seal off in the opposite direction without any leakage water. The opening stroke of the valve cone is provided with an end position damping and dimensioned such that when the return flow starts a fast closure is assured.

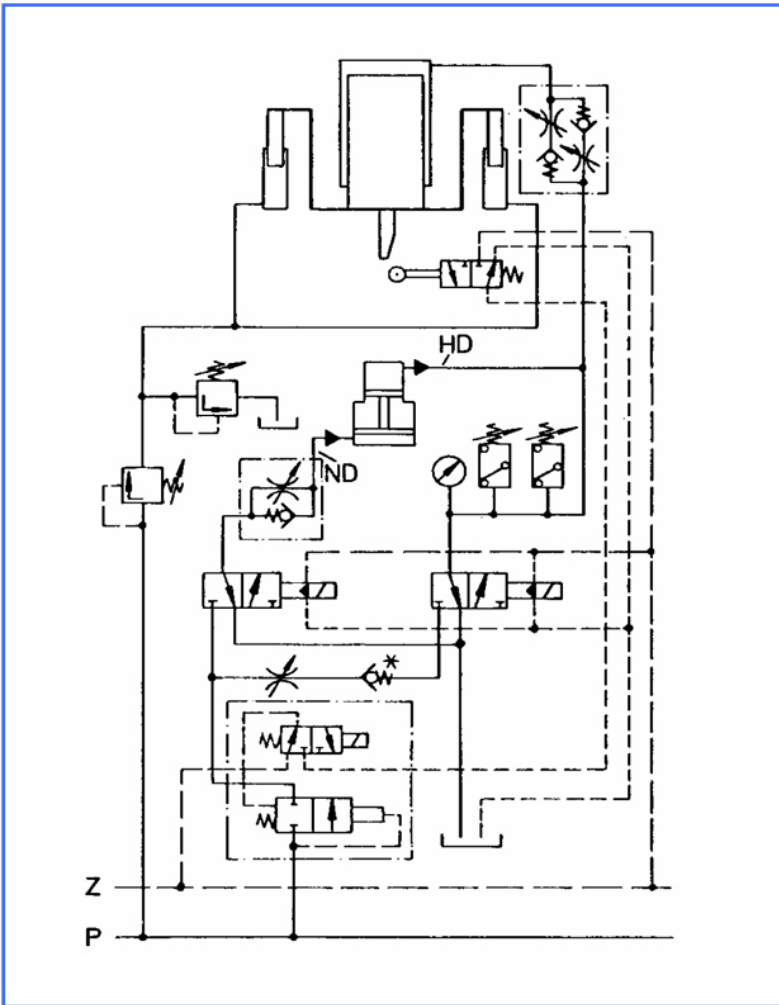
The opening pressure is 1 bar. The max. working pressure should not exceed 320 bar. However, the check valves are also available for other opening pressures as well as without closing spring. Check valves without spring—flow direction A to B fitted into the line in a direction pointing vertically upwards—may also be used as intake valves, for example.

Special features

The valve cone as well as the closing spring are fitted in an extremely flow-promoting fitted cartridge. A double guide for the valve cone provides for a perfect seal on the valve seat. The closing spring is chambered such that medium cannot flow through the same. Thus, in the event of any spring fracture occurring it is impossible for debris to enter into the circuit. Check valves of this type are almost insensitive with regard to the high flow speeds occurring in hydraulic press water systems.

All wear parts are made of corrosion resistant materials, are easy to access and fast to replace. The mounting position can be freely chosen.





* Mounting example