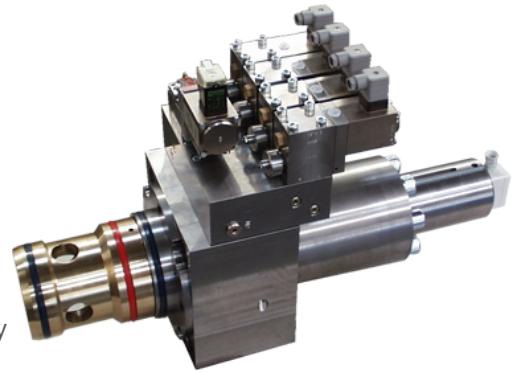


2/2 dir. contr. proportional valve for water and oil hydraulics, DN 25 to 100

- Pilot-controlled proportional valves
- Pilot-control by means of own medium
- Leakage-free sealing on valve seat
- Force-ctrlolles working piston
- Smooth switching, no shock impacts
- Wear parts are easy to access an fast to replace
- Actuation magnet is protected against dirt and humidity
- The proportional valve can be driven by a position control card BLS1 only



TECHNICAL DATA

The 2/2 directional control proportional valves are particularly suitable for HFA liquids and clear water up to operating pressures of 320 bar maximum.

Via proportional pilot-control valves, the volume flow through the opening cross-section and the pressure difference on the valve are determined.

Type
 Fitted seat valve

Pilot-control press.
 =system pressure, min. 25bar

Contr. medium
 Own medium

Press. fluid
 HFA acc. to CETOP or VDMA standard sheet 24320 with 95% water and 5% Additives, non-lubricated water

Contr. medium return
 separate and depressurized into the tank

Max. operating pressure
 320bar

Flow
 See table

Fluid temperature
 5°C to 45°C

